

Leighton Hospital Emergency Department Monthly Bulletin: April 2008 to March 2009

This bulletin provides a breakdown of all injury attendances at Leighton Hospital Emergency Department (ED) between April 2008 and March 2009.

Between April 2008 and March 2009 there were 40,440 injury attendances. Injury attendances peaked in May (n=3,843), with February (n=2,851) having the least number of injury attendances (**Figure 1**).

For all months there were more male injury attendances than female presenting at Leighton Hospital ED (56%).

Figure 2 presents the age group of injury attendances. Across the whole year the majority of injury attendances were made by individuals aged 30-59 years.

Table 1 details the injury group of injury attendances. The majority of injury attendances

were classified as 'other injury' (85%); 6% were recorded as road traffic collisions (RTCs) and 4% assaults.

Table 2 illustrates the source of referral for patients presenting with injuries. The majority (75%) of injury attendees self-referred.

Table 3 presents injury attendances by location of incident. A third (32%) were recorded as occurring in a public place and 29% in the home.

Table 4 shows the discharge destination of injury attendances. Seven in ten of attendees were discharged.

Assault attendees presenting at Leighton Hospital ED between April 2008 and March 2009 were mainly male (72%) and the majority (44%) were aged between 18 and 29 years of age. **Table 5** shows the primary location of assault was recorded as occurring in a public place (43%).

Figure 1: Gender of injury attendances by month, April 2008 to March 2009

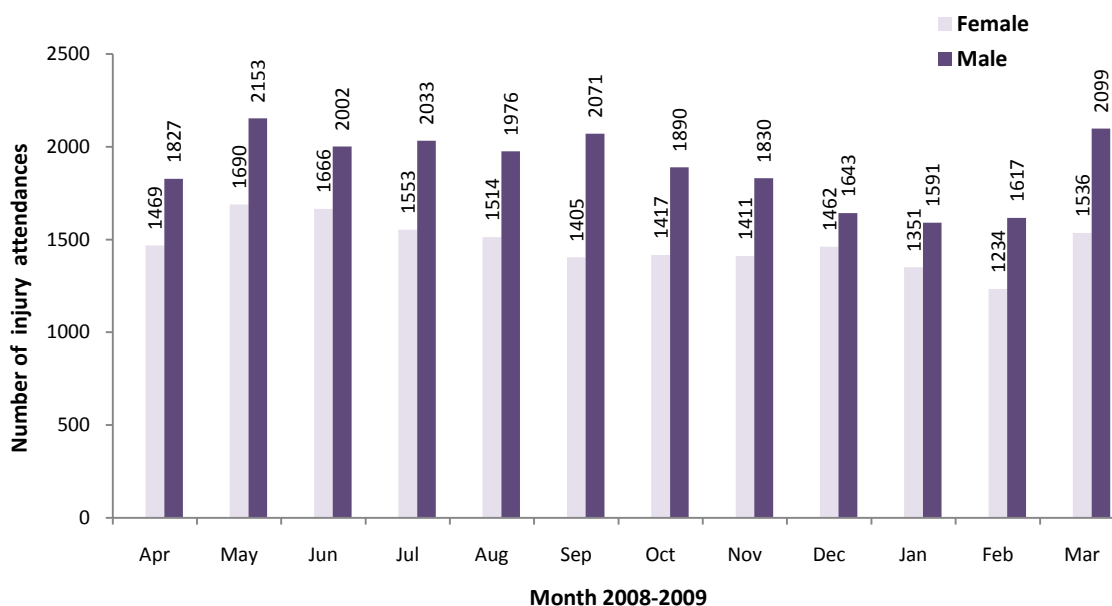


Figure 2: Age group of injury attendances by month, April 2008 to March 2009

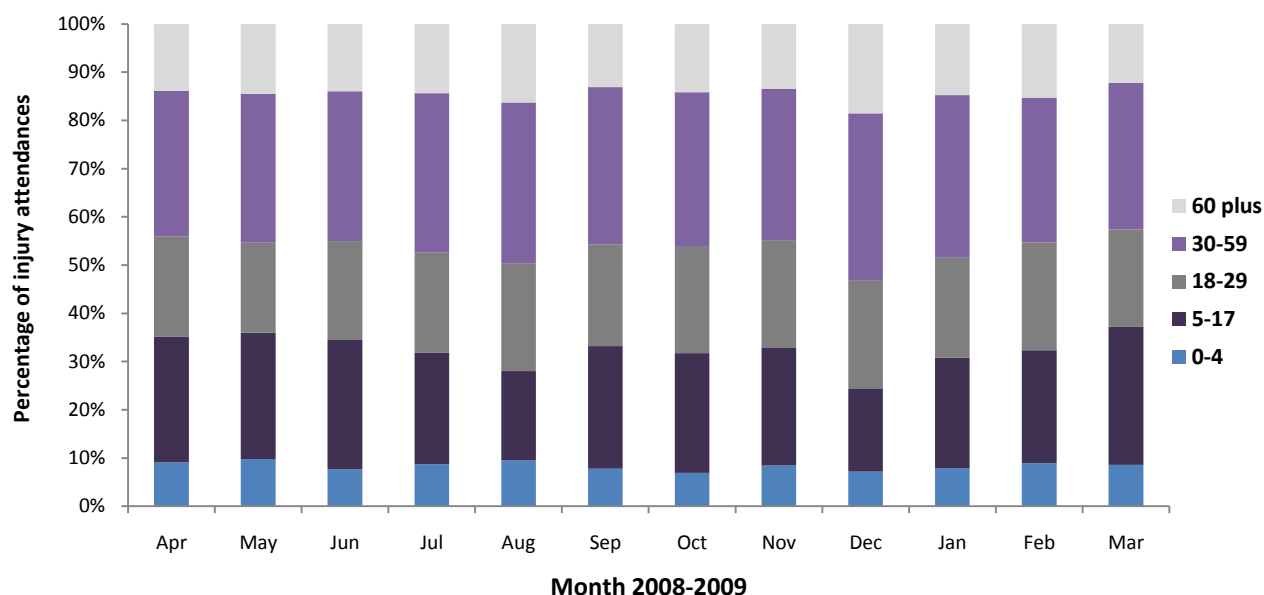


Table 1: Injury attendances by injury group, April 2008 to March 2009¹

Injury group	Apr	May	Jun	Jul	Aug	Sep	Oct	Nov	Dec	Jan	Feb	Mar	Total	%
Other injury	2805	3346	3124	3042	2947	2887	2844	2754	2609	2508	2446	3136	34448	85%
RTC	184	156	217	206	198	194	198	208	229	171	161	194	2316	6%
Assault	113	138	113	119	117	130	106	126	125	120	109	116	1432	4%
Sports injury	100	80	84	80	49	124	67	70	42	62	63	101	922	2%
Deliberate self-harm	71	63	59	62	88	76	63	52	67	64	51	58	774	2%
Bites/stings	23	60	71	77	91	65	29	25	33	17	21	30	542	1%
Firework injury	***	***	***	***	***	***	***	6	***	***	***	***	6	0%
Total	3296	3843	3668	3586	3490	3476	3307	3241	3105	2942	2851	3635	40440	100%

Table 2: Injury attendances by source of referral, April 2008 to March 2009

Source of referral	Apr	May	Jun	Jul	Aug	Sep	Oct	Nov	Dec	Jan	Feb	Mar	Total	%
Self referral	2493	2965	2753	2730	2660	2614	2418	2388	2270	2163	2096	2693	30243	75
Emergency services	285	305	334	296	369	364	359	338	382	287	285	300	3904	10
Other	324	328	326	304	298	305	302	298	225	254	274	362	3600	9
Work	54	63	71	62	44	42	52	50	50	49	43	71	651	2
Educational establishment	31	63	53	44	***	40	67	70	38	54	43	76	579	1
General practitioner	38	40	44	50	43	40	25	26	45	36	27	34	448	1
Referred from minor injuries unit	34	40	39	31	42	25	46	14	22	22	27	31	373	1
Unknown	***	***	26	40	5	***	11	28	31	51	33	26	270	1
Police	12	14	6	13	14	14	9	14	22	11	14	23	166	0
NHS direct	8	10	10	***	14	9	10	8	11	8	8	10	114	0
Health care provider	10	8	***	8	***	14	***	***	***	***	***	***	82	0
Local authority social services	***	***	***	***	***	***	***	***	***	***	***	***	10	0
Total	3296	3843	3668	3586	3490	3476	3307	3241	3105	2942	2851	3635	40440	100

¹ *** Please note that all numbers less than five have been suppressed in line with patient confidentiality and if there is only one number in a category then two numbers will be suppressed at the next level (e.g. <6) in order to prevent back calculations from totals.

Table 3: Injury attendances by location of incident, April 2008 to March 2009

Incident location	Apr	May	Jun	Jul	Aug	Sep	Oct	Nov	Dec	Jan	Feb	Mar	Total	%
Public place	1054	1180	1247	1118	1082	1078	1175	1020	965	836	896	1163	12814	32
Home	925	1030	1138	1001	1045	1022	976	860	915	868	886	917	11583	29
Other	713	827	682	712	750	517	261	207	187	190	213	216	5475	14
Unknown	164	408	149	336	366	410	351	663	701	628	446	774	5396	13
Work	273	225	258	281	243	259	305	261	205	217	217	252	2996	7
Educational establishment	167	173	194	138	***	190	239	230	132	203	193	313	2176	5
Total	3296	3843	3668	3586	3490	3476	3307	3241	3105	2942	2851	3635	40440	100

Table 4: Injury attendances by discharge destination, April 2008 to March 2009

Discharge destination	Apr	May	Jun	Jul	Aug	Sep	Oct	Nov	Dec	Jan	Feb	Mar	Total	%
Discharged	2349	2834	2673	2659	2399	2438	2302	2378	2053	1989	1892	2528	28494	70
Referred	767	809	822	742	863	867	826	693	867	792	809	898	9755	24
Other	131	140	100	115	133	101	87	94	118	91	93	146	1349	3
Admitted	49	60	73	70	95	70	92	76	67	70	57	63	842	2
Unknown	***	***	***	***	***	***	***	***	***	***	***	***	***	0
Total	3296	3843	3668	3586	3490	3476	3307	3241	3105	2942	2851	3635	40440	100

Table 5: Location of assault for assault attendances, April 2008 to March 2009

Assault location	Apr	May	Jun	Jul	Aug	Sep	Oct	Nov	Dec	Jan	Feb	Mar	Total	%
Public place	42	56	54	46	48	58	45	66	48	44	57	50	614	43
Unknown	8	10	***	19	8	15	21	32	45	46	19	50	279	19
Other	35	47	25	30	37	19	5	5	10	10	6	***	232	16
Home	16	17	17	18	19	24	16	16	15	13	22	7	200	14
Educational establishment	***	***	10	***	***	***	10	***	***	***	***	***	58	4
Work	8	***	***	***	***	***	9	***	***	***	***	***	49	3
Total	113	138	113	119	117	130	106	126	125	120	109	116	1432	100

Published January 2011

Jennifer Brizell (Merseyside and Cheshire TIIG officer)

Centre for Public Health, Faculty of Health and Applied Social Sciences, Liverpool John Moores University

3rd Floor, Henry Cotton Campus, 15-21 Webster Street, Liverpool, L3 2ET

Tel: 0151 231 4500 Email: j.s.brizell@ljmu.ac.ukWebsite: www.tiig.info (please note all data requests should be made through the TIIG website)